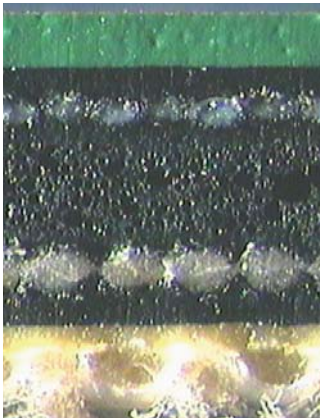


blanket S 107M

For Higher Quality In Offset Printing



Print quality and profitability are directly related to the choice blanket.

Application

The printcom blanket S 107M has been designed for high-speed, high-quality commercial sheetfed offset printing. For top-notch reproductions, less plate wear and shorter make-ready times, it features an enhanced compressible layer that lends instant rebound properties and excellent smash resistance. Its buffed, solvent-resistant surface produces both precise halftones and full solids, giving you the richest of contrasts. To ensure the highest level of print quality and the longest service life possible, use this blanket in combination with manroland-approved system components.

Advantages

- Enhanced compressible layer construction
- Buffed, solvent-resistant printing surface
- Superior solids
- Minimum dot gain
- Rich contrasts
- Shortest make-ready times
- Excellent resistance against smashes
- Significantly reduced plate wear
- Water and solvent proof fabric backing
- Reduced gauge loss



To ensure the best possible printing performance, in addition to the dynamic testing of mechanical properties such as blanket stiffness and feeding characteristics, routine bar tear-off tests and yearly blanket benchmark tests are conducted in the manroland Research and Development departments.

printcom stands for “print competence” and represents manroland’s offering of process-compliant system components for the printing industry. Customer satisfaction is our top priority, and the printcom team is here to serve you.

General Information

Surface Rubber	for conventional sheetfed inks
Colour of Surface Rubber	green
Thickness	0.77 in (3-ply rating)
Thickness Tolerance	+/- 0.001 in
Fabric Plies	3
Compressible Layer	closed cells

Mechanical Properties

Micro Hardness (DIN 53505)	66 Shore A
Overall Hardness	70 Shore A
Surface Finish	buffed
Roughness R _a	0.6 µm to 1.0 µm
Elongation at 10 N/mm	< 0.8%
Tensile Strength	4,500 N/mm
Compressibility at 0.23 mm indentation	250 N/cm
manroland Bar Tear-Off Test (> 400 N/cm)	passed

Torque on manroland Presses

The newly mounted blanket must be re-tightened after the first 1,500 revolutions!

Format 0b	50 Nm
Format 3b	65 Nm
Format 4 to 7b	120 Nm
Format 8	leading edge 60 Nm, tail edge 100 Nm

Augsburg.1.0808, us-english, blanket S 107M



manroland, Inc.
 800 East Oak Hill Drive
 Westmont, IL 60559
 vox 630 920 2000
 fax 630 321 3154
 printcom@manroland.us
 www.manroland.us

manroland