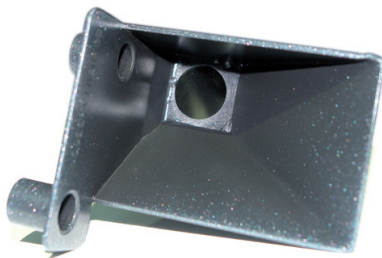


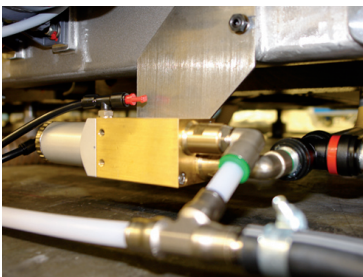
UPGRADES

Active Drain System for BW and ICW

ps printservices®
a trademark of manroland



Funnel with special surface coating.



A dedicated cylinder for each printing unit enables efficient draining of the washing agent/ink mixture.

For ROLAND 700 HiPrint

Active draining of the washing agent under high pressure.

Optimizing the wash-up processes

Printers today are expected to be flexible. It is hardly possible to test every combination of materials before use. So it can happen, for example, that an excellent result is achieved in the printing process and the wash-up process is complicated by a viscous mush forming that block up the drain pipes. Any of various factors may be the cause. To enable proper draining of the washing agent/ink mixture, manroland has optimized the wash-up devices for blankets and impression cylinders. With the ROLAND 700 HiPrint, for example, a brush-type blanket wash-up device with active drain system is standard equipment by now. Now you can upgrade installed presses with the latest equipment for blanket wash-up and impression cylinder wash-up (if ICW devices exist).

Advantages of the new wash-up devices

The innovation concerns the draining of the washing agent/ink mixture. We have optimized the position of the waste outlet in the washing cassettes and fitted the drain funnel with a special ink-repellent coating. This avoids blocking in the funnel area and guarantees better draining.

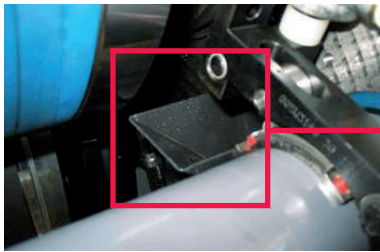
In addition, an ink-repellent hose with low sliding resistance is used, and the washing agent/ink mixture is actively pumped out of the lines. This is done using a dedicated pump cylinder for each printing unit. Should, despite all this, deposits develop in the lines, then these will be removed by high pressure.

Effectively avoiding drain blocking

Use of the optimized drain system for blanket and impression cylinder wash-up devices will effectively avoid blocking in the drain areas. You can reduce the cleaning and maintenance operations formerly required while profiting as usual from high productivity and optimum wash-up results in the printing process. ■■

Advantages

- Improved draining of the washing agent/ink mixture into the waste lines
- Active cleaning of the drain lines with suction and blast air
- Avoidance of blocking in the drain area
- Reduction of cleaning and maintenance work
- Increase in production reliability



Remarks

Upgradability depends on the series of the press. Therefore this must be checked in each case. Upgrading of the impression cylinder wash-up device is possible only if a wash-up device for the impression cylinder exists

